



LEG #6 RECIFE-LORIENT

Special Sailing Instructions

Published 22nd March 2026

SI 1. RULES

- 1.9 Times:
 In Recife, UTC -3
 In Lorient, UTC +2

SI 2. RACE OFFICE

- IC 2.1 The offices of the Event's General Organisation, Race Direction, the Race Committee, the Jury and the press centre are located at:
 Recife: Recife Marina, Cais Santa Rita - São José, Recife - Pernambuco, Brazil
 Lorient: Maison des Skippers, Terre-plein du Sous-Marin Papin, n°1, 56100 Lorient, France

SI 5 PROGRAMME

| | | | |
|--------------------------|-------------------|---|---------|
| Thursday 26th March 2026 | | Equipment inspections – see schedule with François Angoulvant | |
| Saturday 28th March | 1000 | Start Briefing - mandatory attendance for all competitors racing in Leg #6 | Novotel |
| | 1100 | Official photos - mandatory attendance for all competitors racing in Leg #6 | |
| TBC | | Immigration formalities | TBC |
| | 1200 | Departure from pontoon | |
| Sunday 29th March | 1300 | Spectator start – off Marco Zero | |
| | 1400 (local time) | Start Leg #6 to Lorient | |

SI 6 CLASS FLAG

The class flag will be the Globe40 flag

SI 7 THE COURSE

Globe 40 Leg #6 – approx 3745 NM

| | | | | |
|----|--|-------------------------|-------------|--------------|
| 1 | Starting area - near the Recife Channel entrance | | | |
| 2 | WPT Olinda | To be left to port | 08°02.175 S | 034°49.925 W |
| 3 | Ile de Groix | To be left to starboard | | |
| 3a | Finish line - WPT Globe40 Lorient North | To be left to port | 47°41.527 N | 003°25.153 W |
| 3b | Finish line – WPT Globe40 Lorient South | To be left to starboard | 47°40.941 N | 003°24.982 W |

SI 8 MARKS

The starting marks will be:

The committee boat and an inflatable buoy (colour to be specified at the briefing).

An « Inner » protection mark

SI 9 PROHIBITED AREAS

Boats shall not sail in the prohibited areas as set out in official nautical documents, Traffic Separation Schemes (TSS), protected areas for swimming and around dive boats, as well as all areas forbidden to navigation as specified in Appendix 1 of the Leg #6 SSI.

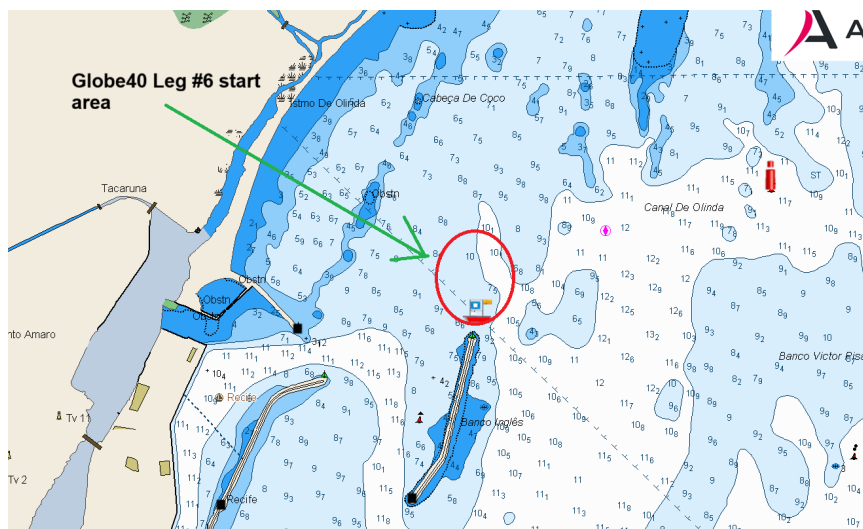
It is the skippers' responsibility to familiarise themselves with the areas that are prohibited or regulated. Prohibited areas are considered as obstructions. RRS [Definitions Obstruction (c)]

SI 10 THE START

SI 10.2 The starting area will be near the Recife Channel entrance.

SI 10.3 The starting line shall be between an orange flag on the committee vessel at the starboard end of the line and an inflatable buoy at the port end of the line (colour to be specified at the briefing).

An « Inner » protection mark may be laid near the starting line. This mark is therefore a starting mark and shall be left on the same side as the committee boat. Passing between this mark and the committee boat is prohibited.



SI 10.6 Late starters

10.6.a) a boat that is unable to start within the time specified in SI 10.5.4 may be given permission to start by the Race Committee and Race Direction at least two hours after and a maximum of 48 hours after the starting signal of the race

Taking into account Amendment N°2 of the GLOBE 40 2025-2026 SI dated 25 January 2026

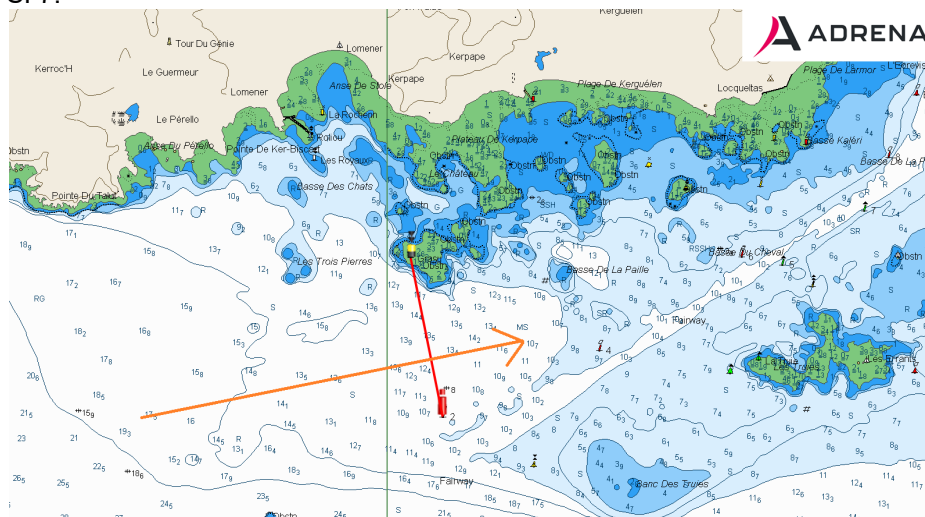
Race Direction/ the Organising Authority can authorise an additional delay beyond 48 hours for a late starter.

SI 10.6 b) The starting line for late starters is as follows:

| | |
|--|--------------------------|
| Waypoint Recife W – leave to port | 08°02.642 S 034°31.634 W |
| Waypoint Recife E – leave to starboard | 08°02.676 S 034°51.005 W |

SI 11.1 THE FINISH

The finishing line will be a virtual line, calculated by YB. The geographical coordinates of the finish line are specified in SI 7.



SI 12 SAFETY – COMMUNICATIONS

- 12.1 The race channel will be VHF 72
- Recife pilots – VHF 13

SI 14.4 ACCIDENTALLY BROKEN SEAL

- For a broken engine seal: penalty of 76 minutes
- For any other broken seal: penalty of 38 minutes

SI 16. SCORING

SI 16.2 Intermediate rankings and positions are scheduled every 4 hours except for the start and finish phases, and published on the website.

SI17. EQUIPMENT AND MEASUREMENT INSPECTIONS (DP/NP)

- 17.1.1 Equipment and measurement inspections will take place before the start.
- 17.1.4 There is no maximum limit for the quantity of embarked drinking water and drinkable liquid in the fixed tanks of the boat and/or in containers of not more than 10 litres.
- 17.6 A boat shall be fully compliant with all the rules of the event from 1400 on Saturday 28th March 2026 until the boat is inspected once she has finished the leg.

SI 20. SUPPORT TEAM VESSELS (DP/NP)

- 20.2 Accredited STV may enter the 200 metre area around the starting line reserved for competitors up until 15 minutes before the starting signal.

SI 23. COMMUNICATION (NP/DP)

- 23.2 An FTP and WhatsApp number are available for skippers to send their photos and videos.

—> Via WhatsApp +33 6 46 36 40 02

—> Via FTP

<ftp.cluster030.hosting.ovh.net>

Identifiant: ffquod-IIF14

Mot de passe: Globe402025

SI 27 PRIZE-GIVING

The prize-giving will be held on Saturday 25th April 2026 in Lorient. Boats shall remain in their allocated berth in Lorient La Base from when they arrive in Lorient until the end of the prize-giving.

SI Globe40 2025

Delete 17.3.1

Replace with:

17.3.1 The engine seal of the forward gear is mandatory and shall be fitted according to the procedure defined in Appendix 6 « Auto-sealing procedure ». The engine seal shall not be broken or removed without authorisation.

NOR Globe40 2025

Appendix 2, paragraph 2.1 is changed as follows:

- A spinnaker or gennaker, sealed, usable after agreement from Race Direction and resulting in a penalty of 5 hours.

Boats are permitted to carry additional sails on board within the limit of 12 sails. These sails shall be sealed. The penalty for breaking the seal of one of these sails will be at the Jury's discretion.

Yvon Poutriquet / Chairman of the Race Committee

Original signed

Georges Priol / Chairman of the Jury

Original signed

Miranda Merron / Race Director

Original signed

Appendix 1 Leg #6 Prohibited areas

| TSS CABO SAO VICENTE | | |
|-----------------------------|-------------|--------------|
| TSSCabo Sao Vicente A | 37°02.500 N | 009°11.700 W |
| TSSCabo Sao Vicente B | 36°56.700 N | 009°10.300 W |
| TSS Cabo Sao Vicente C | 36°51.500 N | 009°04.300 W |
| TSSCabo Sao Vicente D | 36°50.100 N | 008°57.200 W |
| TSS Cabo Sao Vicente E | 36°25.200 N | 009°06.000 W |
| TSS Cabo Sao Vicente F | 36°28.460 N | 009°21.600 W |
| TSS Cabo Sao Vicente G | 36°44.200 N | 009°39.850 W |
| TSS Cabo Sao Vicente H | 36°56.600 N | 009°43.300 W |

| TSS CAPE ROCA | | |
|----------------------|-------------|--------------|
| TSS Cape Roca A | 38°52.000 N | 009°41.100 W |
| TSS Cape Roca B | 38°39.700 N | 009°40.000 W |
| TSS Cape Roca C | 38°33.900 N | 010°11.700 W |
| TSS Cape Roca D | 38°40.900 N | 010°13.800 W |
| TSS Cape Roca E | 38°52.000 N | 010°13.800 W |

| TSS CAPE FINISTERRE | | |
|----------------------------|-------------|--------------|
| TSS Cap Finisterre A | 43°31.400 N | 010°05.200 W |
| TSS Cap Finisterre B | 43°21.000 N | 009°36,400 W |
| TSS Cap Finisterre C | 43°10.500 N | 009°44,000 W |
| TSS Cap Finisterre D | 42°52.800 N | 009°44.000 W |
| TSS Cap Finisterre E | 42°52.800 N | 010°13.850 W |
| TSS Cap Finisterre F | 43°18.950 N | 010°13.850 W |

| TSS SOUTH SCILLY | | |
|-------------------------|-------------|--------------|
| TSS South Scilly A | 49°46.050 N | 006°16.550 W |
| TSS South Scilly B | 49°35.540 N | 006°16.400 W |
| TSS South Scilly C | 49°35.550 N | 006°34.100 W |
| TSS South Scilly D | 49°46.030 N | 006°29.550 W |

| TSS USHANT | | |
|-------------------|-------------|--------------|
| TSS Ouessant A | 49°02.050 N | 005°36.700 W |
| TSS Ouessant B | 48°48.600 N | 005°25.000 W |
| TSS Ouessant C | 48°37.200 N | 005°11.850 W |
| TSS Ouessant D | 48°29.350 N | 005°22.050 W |
| TSS Ouessant E | 48°35.000 N | 005°42.500 W |
| TSS Ouessant F | 48°42.500 N | 006°03.100 W |
| TSS Ouessant G | 48°56.400 N | 005°51.600 W |

| ZI ILE D'YEU WINDFARM | | |
|-----------------------|-------------|--------------|
| ZI Yeu A | 46°57.130 N | 002°31.600 W |
| ZI Yeu B | 46°50.915 N | 002°24.260 W |
| ZI Yeu C | 46°48.025 N | 002°29.465 W |
| ZI Yeu D | 46°53.075 N | 002°35.435 W |
| ZI Yeu E | 46°54.965 N | 002°35.505 W |

| FIRING RANGE LINES R13A2 | | |
|--------------------------|-------------|--------------|
| R13A2 A | 47°41.166 N | 003°21.500 W |
| R13A2 B | 47°31.816 N | 003°09.666 W |
| R13A2 C | 47°35.000 N | 003°25.366 W |
| R13A2 D | 47°37.233 N | 003°25.333 W |
| R13A2 E | 47°39.333 N | 003°24.000 W |