



## LEG #4 SYDNEY-VALPARAISO

### Special Sailing Instructions

Published 28th December 2025

#### SI 1. RULES

- 1.9 Times:  
In Sydney, UTC +11  
In Valparaiso, UTC -3

#### SI 2. RACE OFFICE

- IC 2.1 The offices of the Event's General Organisation, Race Direction, the Race Committee, the Jury and the press centre are located at:  
Sydney: Cruising Yacht Club of Australia, 1 New Beach Road, Darling Point NSW 2027  
Valparaiso until 4/02/26: Puerto Deportivo Valparaiso, Muelle Barón, Valparaiso  
Valparaiso from 5/02/26: Club de Yates Higuierillas, Av Borgoño 21, 555 Concón, Valparaiso

#### SI 5 PROGRAMME

|                                      |                   |   |      |
|--------------------------------------|-------------------|---|------|
| Monday 29th to Tuesday 30th December |                   | Equipment inspections – see schedule with François Angoulvant               |      |
| Tuesday 30th December                | 1830              | Evening event Cruising Yacht Club of Australia                              | CYCA |
| Wednesday 31st December              | 1000              | Start Briefing - mandatory attendance for all competitors racing in Leg #4  | CYCA |
|                                      | 1100              | Official photos - mandatory attendance for all competitors racing in Leg #4 |      |
| Thursday 1st January 2026            | 1100              | Immigration formalities   |      |
|                                      | 1300              | Departure from pontoon  | CYCA |
|                                      | 1500 (local time) | Start Leg #4 to Valparaiso  |      |

#### SI 6 CLASS FLAG

The class flag will be the Globe40 flag

## SI 7 THE COURSE

### Globe 40 Leg #4 – approx 6180 NM

|    |                                |                         |             |              |
|----|--------------------------------|-------------------------|-------------|--------------|
| 1  | Starting area near Point Piper |                         |             |              |
| 2  | Lady Bay port channel mark     | To be left to starboard | 33°49.998 S | 151°16.622 E |
| 3a | Finish line - Caleta Membrillo | To be left to starboard | 33°01.312 S | 071°37.930 W |
| 3b | Finish line - WPT Valparaiso   | To be left to port      | 33°01.312 S | 071°37.454 W |

## SI 8 MARKS

The starting marks will be:

The committee boat and an orange inflatable buoy.

## SI 9 PROHIBITED AREAS

Boats shall not sail in the prohibited areas as set out in official nautical documents, Traffic Separation Schemes (TSS), protected areas for swimming and around dive boats, as well as all areas forbidden to navigation as specified in Appendix 1 of the Leg #4 SSI.

It is the skippers' responsibility to familiarise themselves with the areas that are prohibited or regulated. Prohibited areas are considered as obstructions. RRS [Definitions Obstruction (c)]

## SI 10 THE START

SI 10.2 The starting area will be near Point Piper.

SI 10.3 The starting line shall be between an orange flag on the committee vessel at the starboard end of the line and an orange inflatable buoy at the port end of the line.

SI 10.6 Late starters

SI 10.6 b) The starting line is as follows:

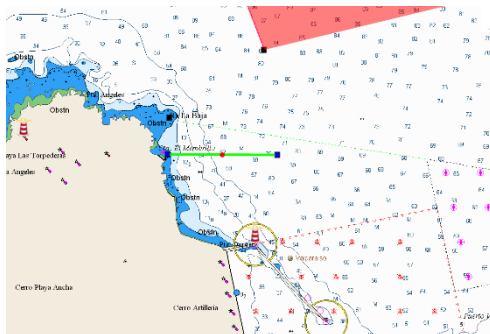
Waypoint Point Piper – leave to starboard 33°51.831 S 151°15.146 E

Waypoint Bradley's Head – leave to port 33°51.210 S 151°14.782 E

## SI 11.1 THE FINISH

The finishing line will be a virtual line, calculated by YB, between Caleta Membrillo and Waypoint Valparaiso.

The geographical coordinates of the finish line are specified in SI 7.



## **SI 12 SAFETY – COMMUNICATIONS**

- 12.1** The race channel will be VHF 72  
Sydney VTS – VHF 13  
Valparaiso Capuerto Radio – VHF 16

## **SI 14.4 ACCIDENTALLY BROKEN SEAL**

- For a broken engine seal: penalty of 122 minutes  
For any other broken seal: penalty of 61 minutes

## **SI 16. SCORING**

- SI 16.2** Intermediate rankings and positions are scheduled every 4 hours except for the start and finish phases, and published on the website.

## **SI17. EQUIPMENT AND MEASUREMENT INSPECTIONS (DP/NP)**

- 17.1.1 Equipment and measurement inspections will take place before the start.
- 17.1.4 There is no maximum limit for the quantity of embarked drinking water and drinkable liquid in the fixed tanks of the boat and/or in containers of not more than 10 litres.
- 17.6 A boat shall be fully compliant with all the rules of the event from 1500 on Wednesday 31st December 2025 until the boat is inspected once she has finished the leg.

## **SI 20. SUPPORT TEAM VESSELS (DP/NP)**

- 20.2 Accredited STV may enter the 200 metre area around the starting line reserved for competitors up until 15 minutes before the starting signal.

## **SI 23. COMMUNICATION (NP/DP)**

- 23.2 An FTP and WhatsApp number are available for skippers to send their photos and videos.
- > Via WhatsApp +33 6 46 36 40 02
- > Via FTP
- <ftp.cluster030.hosting.ovh.net>  
Identifiant: ffqduod-IIF14  
Mot de passe: Globe402025

## **SI 27 PRIZE-GIVING**

- In Valparaiso, the prize-giving will be held on the 4th February 2026 at the Museo Marítimo Nacional.

## SI Globe40 2025

### Delete 17.3.1

### Replace with:

*17.3.1 The engine seal of the forward gear is mandatory and shall be fitted according to the procedure defined in Appendix 6 « Auto-sealing procedure ». The engine seal shall not be broken or removed without authorisation.*

## NOR Globe40 2025

### Appendix 2, paragraph 2.1 is changed as follows:

*- A spinnaker or gennaker, sealed, usable after agreement from Race Direction and resulting in a penalty of 5 hours.*

*Boats are permitted to carry additional sails on board within the limit of 12 sails. These sails shall be sealed. The penalty for breaking the seal of one of these sails will be at the Jury's discretion.*

Yvon Poutriquet / Chairman of the Race Committee

Original signed

Georges Priol / Chairman of the Jury

Original signed

Miranda Merron / Race Director

Original signed

|  |
|--|
| <b>Appendix 1 Leg #4 Prohibited areas and restricted areas</b> |
|--|

**1) The non safe water side of a Cardinal mark (with the exception of Junction Bell, Sydney Harbour)**

**Other Instructions for Sydney Harbour**

Competitors must maintain a minimum distance of 500m from the bow of any ship and 200m from any ferry and no less than 30m from the sides/stern of any ship or ferry underway.

A boat shall not cause interference to an ocean-going vessel or other vessels having right-of-way under the government right-of-way regulations.

Attention is drawn to Roads and Maritime Services reporting requirements in the case of a collision or injury.

**2)**

| SOW AND PIGS REEF |             |              |
|-------------------|-------------|--------------|
| Sow and Pigs 1    | 33°50.160 S | 151°16.210 E |
| Sow and Pigs 2    | 33°50.217 S | 151°16.294 E |
| Sow and Pigs 3    | 33°50.248 S | 151°16.257 E |
| Sow and Pigs 4    | 33°50.215 S | 151°16.220 E |

**3)**

| SOUTHERN LIMIT              |
|-----------------------------|
| All points south of 50°00 S |

**4)**

| TSS VALPARAISO   |             |              |
|------------------|-------------|--------------|
| TSS Valparaiso 1 | 32°58.053 S | 071°38.844 W |
| TSS Valparaiso 2 | 32°57.502 S | 071°35.936 W |
| TSS Valparaiso 3 | 33°00.579 S | 071°35.769 W |
| TSS Valparaiso 4 | 33°00.932 S | 071°37.512 W |