



LEG #3 REUNION - SYDNEY

Special Sailing Instructions

Including Amendent #1 in red

Published 20th November 2025

SI 1. RULES

- 1.9 Times:
In Reunion, UTC +4
In Sydney, UTC +11

SI 2. RACE OFFICE

- IC 2.1 The offices of the Event's General Organisation, the Race Direction, the Race Committee, the Jury and the press centre are located at:
Reunion : Capitainerie de Plaisance - Port de la Pointe des Galets, Le Port 97420
Sydney until the afternoon of 26/12/2025: Royal Sydney Yacht Squadron, 33 Peel Street Kirribilli NSW 2061
Sydney from the afternoon of 26/12/2025: Cruising Yacht Club of Australia, 1 New Beach Road, Darling Point NSW 2027

SI 5 PROGRAMME

Wednesday 19th to Friday 21st November 2025		Equipment inspections – see schedule with François Angoulvant	
Thursday 20th November	1130-1500	Partner Regatta	
	1830	Official Globe40 evening event and Leg #2 prize-giving	Jardin d'Eden, Saint-Paul
Friday 21st November	1000	Start Briefing - mandatory attendance for all competitors racing in Leg #3	DMSOI, 2 rue Bertholet, Le Port
	1100	Official photos - mandatory attendance for all competitors racing in Leg #3	
Saturday 22nd November	1000	Immigration formalities	Race Office
	1300 (local time)	Start Leg #3 to Sydney	

SI 6 CLASS FLAG

The class flag will be the Globe40 flag

SI 7 THE COURSE

~~Globe 40 Leg #3 – approx 5140 NM~~

1	Starting area to the NW of the St Paul Jetty, approximate position	21°00.206 S	055°15.900 E	
2	Spectator buoy to the north of Cap la Houssaye to be left to starboard			
An offset mark may be added at the briefing on Friday 21st November				
3a	GATE Sydney – South Head	To be left to port	33°49.978 S	151°16.863 E
3b	GATE Sydney – North Head	To be left to starboard	33°49.424 S	151°18.019 E
4a	Finish line – Shark Island west cardinal	To be left to port	33°51.473 S	151°15.331 E
4b	Finish line – fairway buoy	To be left to starboard	33°51.372 S	151°14.038 E

Globe 40 Leg #3 – approx 5140 NM

1	Starting area to the NW of the St Paul Jetty, approximate position	21°00.206 S	55°15.900 E	
2	Spectator buoy to the north of Cap la Houssaye to be left to starboard			
An offset mark may be added at the briefing on Friday 21st November				
3a	GATE Sydney - South Head	To be left to port	33°49.978 S	151°16.863 E
3b	GATE Sydney – North Head	To be left to starboard	33°49.424 S	151°18.019 E
4	Lady Bay port channel mark	To be left to port	33°49.998 S	151°16.622 E
5	Eastern Wedding Cake pile	To be left to starboard	33°50.508 S	151°16.310 E
6	Shark Island	To be left to starboard		
7a	Finish line - Shark Island south cardinal	To be left to starboard	33°51.609 S	151°15.534 E
7b	Finish line – Woollahra Point	To be left to port	33°51.819 S	151° 15.363 E

SI 7.4 Official ranking at the Sydney Heads gate

SI 8 MARKS

The starting marks will be:

The aluminium committee boat and a large yellow cylindrical inflatable buoy.

The spectator mark will be a large yellow cylindrical inflatable buoy. The offset mark, if any, will be tetrahedric ~~orange~~ **yellow** buoy.

SI 9 PROHIBITED AREAS

Boats shall not sail in the prohibited areas as set out in official nautical documents, Traffic Separation Schemes (TSS), protected areas for swimming and around dive boats, as well as all areas forbidden to navigation as specified in Appendix 1 of the Leg #3 SSI.

It is the skippers' responsibility to familiarise themselves with the areas that are prohibited or regulated. Prohibited areas are considered as obstructions. RRS [Definitions Obstruction (c)]

SI 10 THE START

SI 10.2 The starting area will be to the northwest of the St Paul jetty.

SI 10.3 The starting line shall be between an orange flag on an aluminium committee vessel at the starboard end of the line and a large yellow cylindrical buoy at the port end of the line.

SI 10.6 Late starters

SI 10.6 b) The starting line is as follows:

Red ship mooring buoy – leave to starboard 21°00.477 S 055°15.309 E

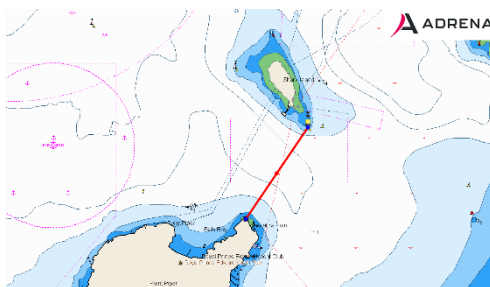
St Paul jetty – leave to port 21°00.397 S 055°16.138 E

SI 10.6 c) This changes SI 7 of the Globe 40 Leg #3 course: « delete 2 (spectator buoy) of the Globe40 Leg #3 course ».

SI 11.1 THE FINISH

The finishing line will be a virtual line, calculated by YB, between the fairway buoy and the Shark Island west cardinal.

The geographical coordinates of the finish line are specified in SI 7.



SI 12 SAFETY – COMMUNICATIONS

12.1 The race channel will be VHF 72

SI 14.4 ACCIDENTALLY BROKEN SEAL

For a broken engine seal: penalty of 102 minutes

For any other broken seal: penalty of 51 minutes

SI 16. SCORING

SI 16.2 Intermediate rankings and positions are scheduled every 4 hours except for the start and finish phases, and published on the website.

SI17. EQUIPMENT AND MEASUREMENT INSPECTIONS (DP/NP)

17.1.1 Equipment and measurement inspections will take place before the start.

17.1.4 The maximum limit for the quantity of embarked drinking water and drinkable liquid in the fixed tanks of the boat and/or in containers of not more than 10 litres is 300 litres.

17.6 A boat shall be fully compliant with all the rules of the event from 1300 on Friday 21st November 2025 until the boat is inspected once she has finished the leg.

SI 20. SUPPORT TEAM VESSELS (DP/NP)

- 20.2 Accredited STV may enter the 100 metre area around the starting line reserved for competitors up until 15 minutes before the starting signal.

SI 23. COMMUNICATION (NP/DP)

- 23.2 An FTP and WhatsApp number are available for skippers to send their photos and videos.

—> Via WhatsApp +33 6 46 36 40 02

—> Via FTP

<ftp.cluster030.hosting.ovh.net>

Identifiant: ffquod-IIF14

Mot de passe: Globe402025

SI 27 PRIZE-GIVING

In Sydney, the prize-giving will be held on the 20th December 2025 at the RSYS.

SI Globe40 2025

Delete 17.3.1

Replace with:

- 17.3.1 The engine seal of the forward gear is mandatory and shall be fitted according to the procedure defined in Appendix 6 « Auto-sealing procedure ». The engine seal shall not be broken or removed without authorisation.*

NOR Globe40 2025

Appendix 2, paragraph 2.1 is changed as follows:

- A spinnaker or gennaker, sealed, usable after agreement from Race Direction and resulting in a penalty of 5 hours.

Boats are permitted to carry additional sails on board within the limit of 12 sails. These sails shall be sealed. The penalty for breaking the seal of one of these sails will be at the Jury's discretion.

Yvon Poutriquet / Chairman of the Race Committee

Original signed

Georges Priol / Chairman of the Jury

Original signed

Miranda Merron / Race Director

Original signed

Appendix 1 Leg #3 Prohibited areas

HERMITAGE		
Hermitage 1	21°04.444 S	055°12.719 E
Hermitage 2	21°05.055 S	055°12.768 E
Hermitage 3	21°04.885 S	055°13.316 E
Hermitage 4	21°04.731 S	055°13.166 E
Hermitage 5	21°04.426 S	055°13.145 E

TROU D'EAU		
Trou d'eau 1	21°06.172 S	055°13.966 E
Trou d'eau 2	21°06.368 S	055°14.263 E
Trou d'eau 3	21°06.090 S	055°14.464 E
Trou d'eau 4	21°05.908 S	055°14.170 E

POINTE DES CHATEAUX		
Chateaux 1	21°09.271 S	055°16.305 E
Chateaux 2	21°09.452 S	055°16.662 E
Chateaux 3	21°09.240 S	055°16.847 E
Chateaux 4	21°09.038 S	055°16.481 E

VARANGUE		
Varangue 1	21°10.275 S	055°16.891 E
Varangue 2	21°10.495 S	055°16.902 E
Varangue 3	21°10.481 S	055°17.152 E
Varangue 4	21°10.266 S	055°17.131 E

ETANG SALE		
L'Etang Salé 1	21°16.036 S	055°19.471 E
L'Etang Salé 2	21°16.233 S	055°19.545 E
L'Etang Salé 3	21°16.216 S	055°19.952 E
L'Etang Salé 4	21°16.025 S	055°19.879 E

SOUTHERN LIMIT	
1	All points south of 46°00 S up to 115°00 E
2	All points south of a line between 46°00 S 115°00 E and 47°00 S 120°00 E
3	All points south of a line between 47°00 S 120°00 E and 48°00 S 125°00 E
4	All points south of 48°00 S from 125°00 E to 155°00 E

TSS WILSONS PROMONTORY		
Wilsons 1	39°10.717 S	146°15.085 E
Wilsons 2	39°10.719 S	146°19.277 E
Wilsons 3	39°08.901 S	146°26.091 E
Wilsons 4	39°01.919 S	146°45.084 E
Wilsons 5	39°18.902 S	146°45.082 E
Wilsons 6	39°18.901 S	146°15.079 E

TSS BASS STRAIT		
Bass 1	38°42.565 S	148°07.645 E
Bass 2	38°40.892 S	148°13.279 E
Bass 3	38°38.526 S	148°17.329 E
Bass 4	38°33.395 S	148°42.548 E
Bass 5	38°39.501 S	148°48.058 E
Bass 6	38°44.582 S	148°22.871 E
Bass 7	38°47.922 S	148°16.831 E
Bass 8	38°49.598 S	148°11.141 E
Bass 9	38°46.883 S	148°09.436 E
Bass 10	38°45.492 S	148°08.732 E