



## Leg #0 Prologue

# Special Sailing Instructions

published on 31<sup>st</sup> July 2025

### SI 1. RULES

#### 1.9 Times

In Lorient, UTC+2

In Cadiz, UTC +2

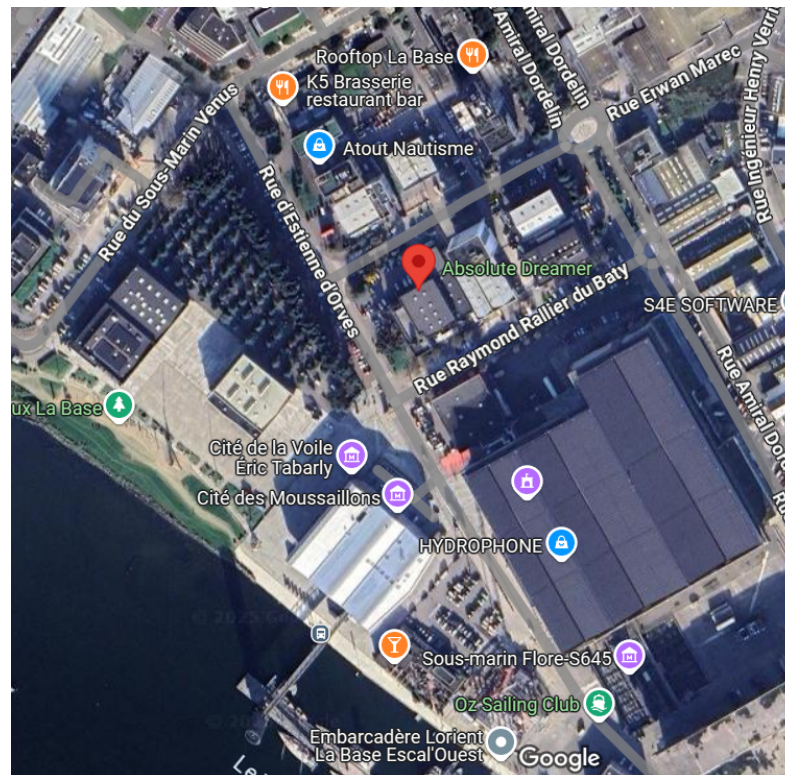
### SI 2. RACE OFFICE

#### SI 2.1 Location of the Race Office

The offices of the Event's General Organisation, the Race Direction, the Race Committee, the Jury and the press centre are located at:


Bâtiment Absolute Dreamer – 1st floor (above Groix & Nature)

7 Rue d'Estienne d'Orves, 56100 Lorient.





## SI 5 SPORTING PROGRAMME

From Monday 25th August to Thursday 28th August	0800	<u>Obligatory presence of Class40s on Pontoon A in Lorient La Base by 0800 on 25<sup>th</sup> August 2025 at the latest.</u> Equipment/ measurement inspections (slots to be reserved at the Race Office)	
Monday 25th August 2025	0900	Opening of the Organisation & Race Offices	
	1400	Welcome Briefing	at the Organisation Office
Friday 29th August	1000	Safety Briefing – mandatory attendance for all competitors racing in the Prologue	at the Organisation Office
Saturday 30th August	1000	Start Briefing – mandatory attendance for all competitors racing in the Prologue photo shoot with Jean-Marie Liot	at the Organisation Office
	1300	compliance of boats	
Sunday 31st August	1100 1200 1400	Leave Lorient La Base Start of the Lorient Parade Start of the race off Groix – coastal course	

## SI 5 SOCIAL PROGRAMME

Monday 25th August 2025	1830	Welcome Cocktail- Lorient La Base	
From Tuesday 26th August to Friday 29th August	1000 / 1200 1400 / 1600	Visit of children from the Centres de Loisirs Lorient Agglomération	
Wednesday 27th August	1000	Press brief	Organisation office
Thursday 28th August	0900 1000	Web Sailing Café - Bretagne Sailing Vallee " The new ambitions of Class40"	Restaurant le Comptoir de Groix
Friday 29th August	1830	Official cocktail event	Bâtiment TR Racing - Lorient La Base

## SI 6 CLASS FLAG

The class flag will be the Globe40 flag



## SI 7 THE COURSE

Globe 40 Prologue - 880NM				
1	Start Globe40			47°39.900 N 003°25.100 W
Possible offset mark				
Coastal course as defined at the briefing on Saturday 30 <sup>th</sup> August 2025				
2	Pen Men	To be rounded	Port	47°39.170 N 003°30.950 W
3	West cardinal mark LA ANA	To be rounded	Port	36°31.302 N 006°20.363 W
4	Green channel mark n°1 LOS COCHINOS	To be rounded	starboard	36°33.075 N 006°19.080 W
5	Finish line – green channel mark n°3	To be left	Port	36°33.138 N 006°18.294W
5	Finish line – isolated danger mark LAS PUERCAS	To be left	Starboard	36°32.905 N 006°18.219W

## SI 8 MARKS

The starting mark, course and offset marks will be specified at the Start Briefing on Saturday 30<sup>th</sup> August 2025.

## SI 9 PROHIBITED AREAS

Boats shall not sail in the prohibited areas as set out in official nautical documents, Traffic Separation Schemes (TSS), protected areas for swimming and around dive boats, as well as all areas forbidden to navigation as specified in Appendix 1 of the Leg#0 SSI.

It is the skippers' responsibility to familiarise themselves with the areas that are prohibited or regulated.

Prohibited areas are considered as obstacles. RRS [Definitions Obstacles (c)]

## SI 10 THE START

The starting area will be in the "Coureaux de Groix", South of Lorient

SI 10.6. Late starters:

SI 10.6.b) the new starting line is as follows:

Northern end: 47°39.900 N 003°25.100 W

Southern end: 47°39.800 N 003°25.100 W

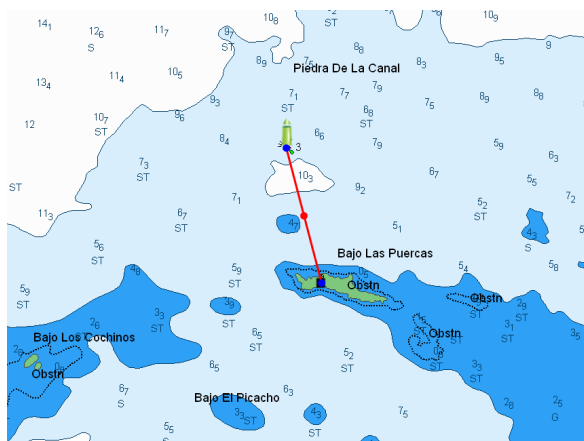
The boat shall cross the virtual starting line from east to west in order to start and sail the course.

### SI 11.1 THE FINISH

The finishing line will be a virtual line, calculated by YB, between the green channel mark n°3 and the isolated danger mark Las Puercas.

The geographical coordinates of the finish line are specified in SI 7.





## **SI 12 SAFETY – COMMUNICATIONS**

**12.1** The race channel will be VHF 72

## **SI 14.4 ACCIDENTALLY BROKEN SEAL NOTED BY TECHNICAL COMMITTEE.**

For a broken engine seal: penalty of 40 minutes.

For any other broken seal: penalty of 20 minutes

## **16. SCORING**

**SI 16.2** Intermediate rankings and positions are scheduled every hour and published on the website.

## **SI 17. EQUIPMENT AND MEASUREMENT INSPECTIONS (DP/NP)**

**17.1.1** Equipment and measurement inspections will take place before the start

Skippers shall request a slot at the Organisation Office when they arrive in Lorient

**17.1.4** According to Class Rule 2.7.1, the maximum quantity of embarked drinking water and drinkable liquid will be 45 litres for two people/ 68 litres for 3 people/ 90 litres for 4 people, in the fixed tanks of the boat and/or in containers of not more than 10 litres.

**17.6** A boat shall be fully compliant with all the rules of the event from 1300 on Saturday 30th August 2025 until the boat is inspected once she has finished the leg.

**17.8** Navigation and anchor lights shall be switched on from 2000 to 2330 on Wednesday 27th August 2025.

## **20. SUPPORT TEAM VESSELS (DP/NP)**

**20.2** Accredited STV may enter the 200 metre area around the starting line reserved for competitors up until 15 minutes before the starting signal.

## **23. COMMUNICATION (NP/DP)**

**23.2** An FTP and WhatsApp number are available for skippers to send their photos and videos.

—> Via WhatsApp +33 6 46 36 40 02

—> Via FTP

<ftp.cluster030.hosting.ovh.net>

Identifiant: ffqduod-IIF14

Mot de passe: Globe402025



## **27 PRIZE-GIVING**

In Cadiz, the prize-giving will be held on Saturday 6<sup>th</sup> September 2025 at the welcome cocktail at the Club Nautico de Cadiz.



## Appendix 1 of Leg#0 Prologue PA

FFVoile-TSS Cap Finisterre		
1	TSS Cap Finisterre A	43°31,400 N 010°05,200 W
2	TSS Cap Finisterre B	43°21,000 N 009°36,400 W
3	TSS Cap Finisterre C	43°10,500 N 009°44,000 W
4	TSS Cap Finisterre D	42°52,800 N 009°44,000 W
5	TSS Cap Finisterre E	42°52,800 N 010°13,850 W
6	TSS Cap Finisterre F	43°18,950 N 010°13,850 W

FFVoile-TSS Cape Roca		
1	TSS Cape Roca A	38°52,000 N 009°41,100 W
2	TSS Cape Roca B	38°39,700 N 009°40,000 W
3	TSS Cape Roca C	38°33,900 N 010°11,700 W
4	TSS Cape Roca D	38°40,900 N 010°13,800 W
5	TSS Cape Roca E	38°52,000 N 010°13,800 W

FFVoile-TSS Cabo Sao Vicente		
1	TSSCabo Sao Vicente A	37°02,500 N 009°11,700 W
2	TSSCabo Sao Vicente B	36°56,700 N 009°10,300 W
3	TSS Cabo Sao Vicente C	36°51,500 N 009°04,300 W
4	TSSCabo Sao Vicente D	36°50,100 N 008°57,200 W
5	TSS Cabo Sao Vicente E	36°25,200 N 009°06,000 W
6	TSS Cabo Sao Vicente F	36°28,460 N 009°21,600 W
7	TSS Cabo Sao Vicente G	36°44,200 N 009°39,850 W
8	TSS Cabo Sao Vicente H	36°56,600 N 009°43,300 W