



LEG #1 CADIX-MINDELO

Special Sailing Instructions

Published 11th September 2025

SI 1. RULES

- 1.9 Times:
In Cadix, UTC +2
In Mindelo, UTC -1

SI 2. RACE OFFICE

- SI 2.1 Location of the Race Office
The offices of the Event's General Organisation, the Race Direction, the Race Committee, the Jury and the press centre are located at:
Cadiz: ground floor of Escuela del Arte, Av. las Cortes de Cádiz, 3, 11012 Cádiz.
Mindelo: Hotel Oasis Porto Grande, Praça Amílcar Cabral, Mindelo – Sao Vicente

SI 5 SPORTING PROGRAMME

Thursday 11th September 2025	1600 - 1900	Partner regatta – mandatory presence of two team members/ sailors	
Saturday 13th September	1000	Start Briefing - mandatory attendance for all competitors racing in Leg #1	Auditorium Escuela del Arte (Race Office)
	1100	Official photos - mandatory attendance for all competitors racing in Leg #1	
	1200	Immigration formalities - mandatory attendance for all non-EU competitors racing in Leg #1	Border police
	1900 - 2000	Official presentation of teams - mandatory attendance for all competitors racing in Leg #1	On the Race Village stage
	2000 - 2030	Autograph session - mandatory attendance for one of the 2 competitors racing in Leg #1	Race Village
Sunday 14th September	1100 - 1200	Leg #1 departure ceremony	
	1300	Start Leg #1 to Cape Verde with coastal course "Diputacion de Cadiz Trophy"	

SI 5 SOCIAL PROGRAMME

Thursday 11th September 2025	2000	Official cocktail event and Prologue prize-giving	Casa de Iberoamerica de Cadix
Friday 12th September	1100	Torre Tavira visit	

SI 6 CLASS FLAG

The class flag will be the Globe40 flag

SI 7 THE COURSE

Globe 40 Leg #1 – 1555 NM				
1	Start Leg #1 Globe40		East of Darsena de los Astilleros	
2	Lateral Green Muelle 5	To be rounded to port	36°31.940 N	006°16.052 W
3	Lateral Green 5	To be rounded to port	36°33.082 N	006°17.303 W
4	Lateral Green 3	To be rounded to port	36°33.141 N	006°18.294 W
5	Lateral Green 1	To be rounded to port	36°33.108 N	006°19.078 W
6	West Cardinal Punta del Sur	To be rounded to port	36°31.296 N	006°20.365 W
7	Bajo San Sebastian - yellow inflatable buoy	To be rounded to port	36°30.460 N	006°19.730 W
8	Diputacion de Cadiz - yellow inflatable buoy	To be rounded to starboard	36°30.390 N	006°17.725 W
8	Sancti Petri - yellow inflatable buoy	To be rounded to starboard	36°21.556 N	006°11.730 W
9a	Finish line - Ilheu dos Passaros Lighthouse	To be left to starboard	16°54.650 N	025°00.690 W
9b	Finish line - Canon on Ponta Joa Ribeiro	To be left to port	16°54.350 N	024°59.910 W

SI 8 MARKS

The starting mark, the Bajo San Sebastian mark, the Diputacion de Cadiz mark and the Sancti Petri mark are inflatable yellow buoys.

SI 9 PROHIBITED AREAS

Boats shall not sail in the prohibited areas as set out in official nautical documents, Traffic Separation Schemes (TSS), protected areas for swimming and around dive boats, as well as all areas forbidden to navigation as specified in Appendix 1 of the Leg#0 SSI.

It is the skippers' responsibility to familiarise themselves with the areas that are prohibited or regulated.

Prohibited areas are considered as obstacles. RRS [Definitions Obstacles (c)]

SI 10 THE START

The starting area will be to the east of Darsena de los Astilleros.

SI 10.6 Late starters**SI 10.6 b) the new starting line is as follows**

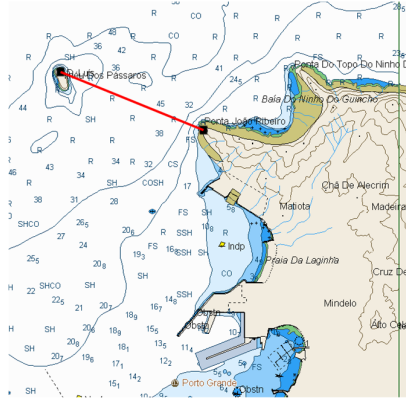
Northern end – Lateral green n°3 – leave to starboard 36°33.138 N 006°18.294W

Southern end – isolated danger Las Puercas – leave to port 36°32.905 N 006°18.219W

SI 11.1 THE FINISH

The finishing line will be a virtual line, calculated by YB, between the Ilheu Dos Passaros Lighthouse to starboard, and the canon on Ponta Joa Ribeiro to port.

The geographical coordinates of the finish line are specified in SI 7.



SI 12 SAFETY – COMMUNICATIONS

12.1 The race channel will be VHF 72

SI 14.4 ACCIDENTALLY BROKEN SEAL

For a broken engine seal: penalty of 32 minutes

For any other broken seal: penalty of 16 minutes

SI 16. SCORING

SI 16.2 Intermediate rankings and positions are scheduled every 4 hours except for the start and finish phases, and published on the website

SI17. EQUIPMENT AND MEASUREMENT INSPECTIONS (DP/NP)

17.1.1 Equipment and measurement inspections will take place before the start.

17.1.4 According to Class Rule 2.7.1, the maximum quantity of embarked drinking water and drinkable liquid will be 78 litres, in the fixed tanks of the boat and/or in containers of not more than 10 litres.

17.6 A boat shall be fully compliant with all the rules of the event from 1300 on Saturday 13th September 2025 until the boat is inspected once she has finished the leg.

SI 20. SUPPORT TEAM VESSELS (DP/NP)

20.2 Accredited STV may enter the 200 metre area around the starting line reserved for competitors up until 15 minutes before the starting signal.

SI 23. COMMUNICATION (NP/DP)

23.2 An FTP and WhatsApp number are available for skippers to send their photos and videos.

—> Via WhatsApp +33 6 46 36 40 02

—> Via FTP

<ftp.cluster030.hosting.ovh.net>

Identifiant: ffquod-IIF14

Mot de passe: Globe402025

SI 27 PRIZE-GIVING

In Mindelo, the prize-giving will be held on 25th September 2025 at Marina Mindelo.

SI Globe40 2025

Delete 17.3.1

Replace with:

17.3.1 The engine seal of the forward gear is mandatory and shall be fitted according to the procedure defined in Appendix 6 « Auto-sealing procedure ». The engine seal shall not be broken or removed without authorisation.

Yvon Poutriquet / Chairman of the Race Committee

Original signed

Georges Priol / Chairman of the Jury

Original signed

Miranda Merron / Race Director

Original signed

Appendix 1 Leg#1 Prohibited areas

FFVoile-TSS Canaries East		
1	TSS Canaries East A	28°19,800 N 014°47,700 W
2	TSS Canaries East B	27°48,780 N 015°00,350 W
3	TSS Canaries East C	27°51,500 N 015°08,850 W
4	TSS Canaries East D	28°20,500 N 014°57,100 W

FFVoile-TSS Canaries West		
1	TSS Canaries West A	28°33,800 N 015°39,300 W
2	TSS Canaries West B	27°58,400 N 016°12,950 W
3	TSS Canaries West C	28°03,450 N 016°19,650 W
4	TSS Canaries West D	28°38,100 N 015°46,800 W

ZI Western Sahara		
1	ZI Western Sahara A	26°06,000 N 015°11,330 W
2	ZI Western Sahara B	26°06,000 N 013°54,000 W
3	ZI Western Sahara C	21°31,000 N 016°25,000 W
4	ZI Western Sahara D	21°31,000 N 017°35,000 W
5	ZI Western Sahara E	24°59.450 N 016°33.700 W

ZI Mauritania		
1	ZI Mauritania A	21°31,000 N 016°25,000 W
2	ZI Mauritania B	16°00,000 N 016°25,000 W
3	ZI Mauritania C	16°00,000 N 017°35,000 W
4	ZI Mauritania D	21°31,000 N 017°35,000 W